

CLIP MP3 PLAYER

HE-MP44F



USER MANUAL

The pictures, diagrams, and certain functions described in this manual may differ from the actual product due to different models

Visit www.hittusa.com for a revised user manual or troubleshooting tips

PREFACE

We express our sincere thanks for purchasing our MP3 Player! Before operating this MP3 Player, be sure to read this user manual carefully. After reading it, please keep it in a safe place for future reference.

We reserve the right to make changes to this MP3 Player and/or this user manual without notice. Please visit our company's website listed on the product packaging for additional product information and/or updates.

NOTE: The pictures, diagrams, and certain functions described in this manual may differ from the actual product due to different models.

SAFETY AND GENERAL INFORMATION

READ THIS INFORMATION BEFORE USING

THIS MP3 PLAYER

- A. New battery can reach its best performance after it has completely charged and discharged for two or three times.
- B. Please charge the new battery for no less than 10 hours for the first three times you are charging, then from the fourth time on, just charge it for six hours and it can reach its best performance.
- C. Do not operate this MP3 Player in extremely cold, hot, dusty or damp environment.
- D. Avoid putting this MP3 Player under direct sunlight
- E. Do not scrub this MP3 Player with a hard object; it may result in scratches on the screen and/or damage to the hardware. Use a damp cotton cloth to gently wipe the shell of the player. Using other chemical cleaning solutions is strictly prohibited.
- F. Keep this MP3 Player and all accessories out of children's reach under 3 years old.
- G. Charge the MP3 Player when:
 - The battery capacity icon is empty and flashing
 - The MP3 Player powers off automatically, immediately after it is turned on.

- H. Avoid operating this MP3 Player under very dry environment to prevent damage from static-shock.
- I. Do not disconnect the USB cable while formatting, uploading or downloading files; disconnecting USB cable will result in file corruption and may require reformatting.
- J. When used as a secured removable disk, users should backup important data. Our company is not responsible for loss of data.
- K. This MP3 Player does not have any user-serviceable parts or accessories. **DO NOT TRY TO DISASSEMBLE THIS MP3 Player.** Use only the AC charger that came with this Player to charge it. Try not to charge the player while using it.
- L. Long exposure to high sound volume may have an effect on your hearing, so please use the appropriate volume level.
- M. Use only the battery, charger, and accessories permitted by the manufacturer. Using other accessories or charger may be a safety hazard or affect product performance and/or void product warranty.
- N. Please properly dispose of the obsolete player and its accessories following your local environmental laws.
- O. If you have any problem using this player, please email help@hittusa.com or contact our customer service center – check our website www.hittusa.com for contact information

NOTE: Please charge the player no less than 10 hours BEFORE first time use.

NOTE REGARDING FCC COMPLIANCE

Users are not permitted to make changes or modify the device in any way. Changes or modifications that are not authorized by the party responsible for compliance could void the user's authority to operate the equipment. This device complies with part 15 of the FCC Rules. Operation is subject to the following two conditions:

- This device may not cause harmful interference, and
- This device must accept any interference received, including interference that may cause undesired operation.

TABLE OF CONTENT

FUNCTIONS OVERVIEW	7
KNOW THE PLAYER	9
BASIC FUNCTIONS.....	10
BUTTONS OPERATIONS	14
MUSIC	15
RECORD	18
VOICE.....	19
FM RADIO.....	20
SYSTEM	22
E-DOCUMENT.....	23
TELEPHONE BOOK.....	24
USB DISK.....	25
OTHER SETTINGS.....	28
SECURED DISK PARTITION.....	30
TROUBLESHOOTING.....	34
TECHNICAL SPECIFICATIONS.....	35
WARRANTY INFORMATION.....	37

FUNCTIONS OVERVIEW

- Refined exterior design

Clip-on design with LCD display

- Multi file format support

Supports MP1, MP2, MP3, WMA, WMV, ASF and WAV files.

- FM Radio

Built-in Radio with preset

- Phone Book

Built-in phone/address book.

- e-Documents

Read text files

- USB Memory

Manage your files in USB memory no driver installation required for Windows 2K or later

- Secured Space'

Partition memory to create a separate encrypted area in the memory using included

program

- Recorder / Repeat

Voice can be recorded and saved in WAV or ACT format. Phase/Contrast repeat available.

- Equalizer Settings

7 Equalizer settings - Normal, Rock, Pop, Classic, Soft, Jazz & Bass

- Play Mode Settings

Normal, Single Repeat, Play Catalog, Repeat Catalog, Repeat All, Shuffle, Lyric.

- Power save Mode

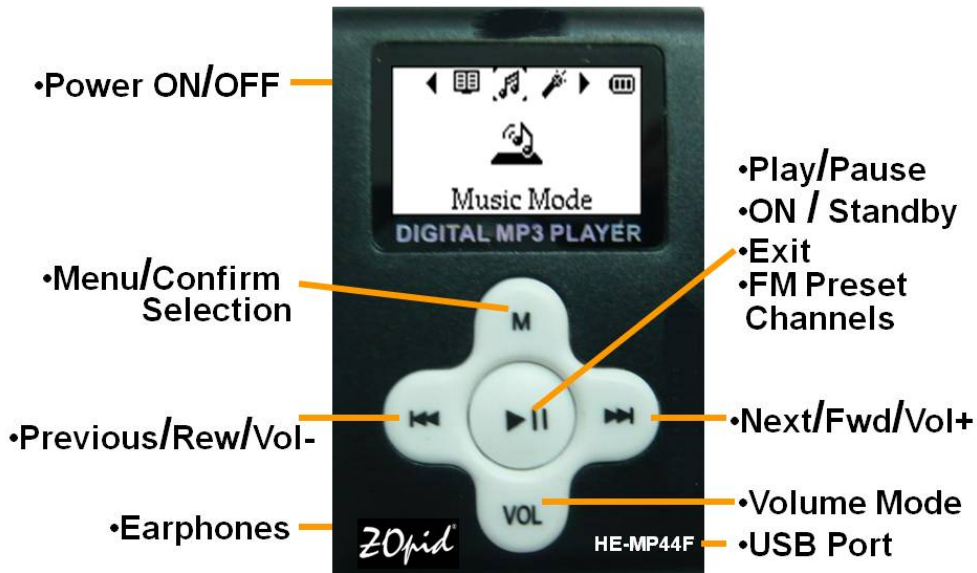
User selectable sleep and battery saving modes

- Graphic User Interface

Menu with icons for a user-friendly interface

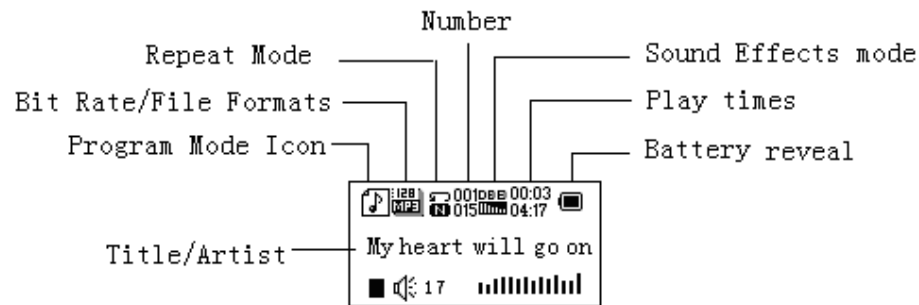
KNOW THE PLAYER

Appearance and Buttons



1. **PLAY:** play/ pause & Confirm selection and Fast Exit from the menus
2. **MODE:** Menu button & Confirm Selection
3. **VOL:** volume adjustment
4. **NEXT:** Next song or menu selection
5. **PREV:** previous song or menu selection
- 6 USB port
- 7 ON/OFF power button
- 8 **Earphones:** Earphone jack

PLAYER DISPLAY



Battery

- A solid battery icon means the battery is fully charged; as the player is used the battery level indicator will be partially filled
- A blank battery indicator means the battery charge is low and must be plugged in to charge the battery.



When the player is plugged in to charge, make sure that the ON/OFF switch is in ON position



When the player is not in use switch the power button to OFF position

BASIC FUNCTIONS

- **Main Menu**

Mode button is used to bring up different

Menus including:

Main Menu - press Mode for a short time to open the menu & press for a longer time to exit from the menu

Sub-Menu - press Mode for a short time to open the sub-menu

- **Navigation Keys:**

Use navigation keys (NEXT & PREV) to select menu options, songs browsing, Fast Rewind or Fast Forward when playing music

- **Various Functions (Modes):**

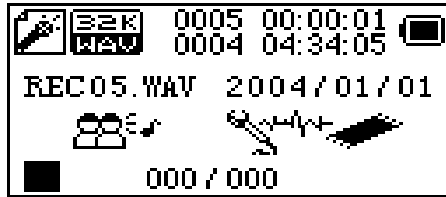
Select different functions through the Main Menu. Short press Mode to open Main Menu and then use Navigation keys to select the different function; short press Mode button to confirm the selection

Main Menu

Music

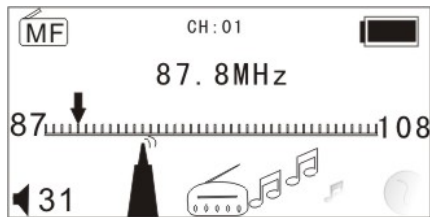
Voice Recorder

Play Voice



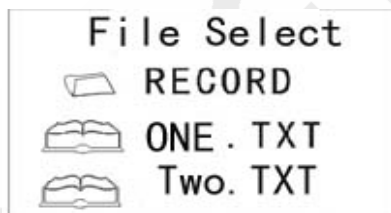
FM Radio

System



eDocuments

Phonebook



- **Connecting player to a computer and enter USB mode:**
- **Volume adjustment:**
Press VOL to enter volume adjustment mode and then short press NEXT/ PREV to increase or decrease the volume.

- **Turn Player ON or OFF:**

Long press PLAY to turn player ON, when the player is off (ON/OFF switch must be in ON position)

Long press PLAY to turn player OFF, when the player is on

- **Play or Stop (pause when in recording) and Exit from the sub-menu:**

Short press PLAY in music play mode to start playing the song.

While music is playing, short press PLAY to pause playing, and long press PLAY to stop playing music

- **Start Recording (short press) / Stop Recording:**

Short press PLAY to stop recording in recording state.

Long press PLAY to exit and save the recorded files

BUTTONS OPERATIONS

- Button definitions
 1. **PLAY:** Turn Player ON, OFF, Play, Pause & Stop, and Fast Exit from the Menus
 2. **MODE:** Bring up the Menus and confirm selections
 3. **VOL:** Switch to volume adjustment mode
 4. **NEXT:** Next file/menu selection, Fast Forward, Volume increase (after switching to Volume mode)
 - 5 **PRE:** Previous file/menu selection, Fast Rewind, Lower the Volume (after switching to Volume mode)
 - 6 **USB:** USB port
 - 7 Earphone Jack
 8. ON/OFF Power Switch
 - **Definition of button operations:**

Button operations include, Short Press, Long Press, and Press & Hold.

 1. **Short press:** Result is achieved as soon as the button is pressed
 2. **Long press:** Press the button for more than a couple of seconds to achieve desired result
 3. **Press:** Result is achieved when the

button is released after pressing it

4. **Hold:** Keep holding the key until the desired result is achieved, e.g. keep holding the PREV/NEXT keys for Fast Rewind/Fast Forward

MUSIC (Play stored MP3 files)



- Simple operation
 1. Plug the earphones into the earphone jack.
 2. Long press PLAY to turn on the player, Press MODE button to select Music option and then short press PLAY button to play music file.
 3. Selecting music files:
PRE -> select previous music file
NEXT-> select next music file
 4. Volume Control:
Short press VOL button, then press PRE to decrease volume or NEXT to increase volume
- **Equalizer**
In the Music playing
Mode

1. Short press MODE to enter Music sub-menu.
2. Press NEXT to select “Equalizer”
3. Short press MODE to confirm selection and enter “Equalizer” sub-menu.
5. EQ selection is as follows:

Natural
Rock
Pop
Classical
Soft
Jazz
DBB

6. Press NEXT to select and short press Mode to confirm

- **Lyrics synchronization**

The player supports *.lrc lyric files to display synchronized lyrics. If lyric file is found, the “” icon is replaced by “” icon.

NOTE: lyrics file must have the same name as the song file e.g. if song file's name is my Love.mp3 then the lyrics file must be named my Love.lrc

If lyrics file on the player matches the song, the lyrics will be displayed automatically without pressing any buttons.

NOTE: In case lyrics file is found but lyrics are not displayed, press Mode button to display lyrics.

RECORD (Voice Recording)



Make sure the battery has enough power when recording. The

player supports up to 99 voice files per catalog / folder.

1. Long press MODE button for the Main Menu
2. Press NEXT button to select Record
3. Short press MODE to enter recording mode.
4. Short press PLAY to start recording.

! While recording, short pressing PLAY will pause recording; then long pressing PLAY will stop recording and save the recorded file and then short pressing MODE will exit from the recording mode.

Or as an alternate, while recording long pressing MODE saves the file and exit from the recording mode.

! Only PLAY and MODE buttons work during recording.

- **Select recording quality**

1. In recording mode, while recording is paused, short press Mode to display recording sub-menu.

2. Press NEXT button to select

Recording type

3. Short press Mode to confirm selection

Fine Recording	WAV format Good sound quality
Long-time Recording	WAV format Normal sound quality
Super Recording.	ACT format High bit rate recording file

4. Press Play to start recording.

VOICE (Playback recorded voice files)

1. Long press MODE button to display Main Menu

2. Press NEXT to select VOICE

3. The player enters Voice mode and play the recorded voice files directly without pressing PLAY.

Selecting recorded voice file

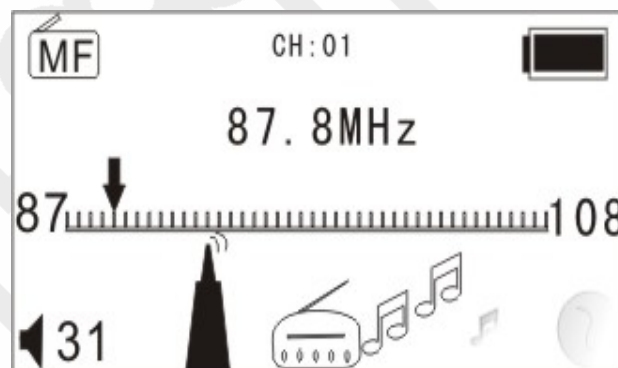
PREV: select previous file

NEXT: select next file

5. Volume Control: press VOL to enter volume adjustment mode, then short press NEXT to increase volume or short press PREV to decrease volume.

FM RADIO

1. Entry Main Menu
2. Push Next Choosing "MF Mode"
3. Press mode to enter Radio mode



Automatic Channel Scan

Hold Last/Next for one second to start the channel search in "100KHz" increments; to stop tuning push Last/Next

Manual Tuning

Push Last once to decrease frequency 100

KHz

Push Next once to increase frequency 100

KHz

Save Channel

Press Mode to access FM submenu and press

Mode again to save a channel

To select a saved channel Press Play

Radio Recording

To record a radio channel, while listening to radio:

- a. Press Mode to enter MF submenu.
- b. Choosing fine record or longtime record - current radio program will start getting recorded
- c. Press and hold Mode to exit from recording mode

Volume control

Push VOL to access Volume Control, Press

Next/Last to change volume level

SYSTEM (Change player's settings)

1. Long press MODE button to display Main Menu.

2, Press NEXT

to select

“System”

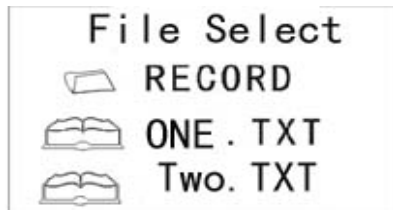
3. Short press Mode to confirm selection

- **Introduction of parameter items**

LCD Set	Set screen backlight and contrast
Language	Choice of 19 different languages
Power Off	Set auto shut off time due to inactivity – time can be set from 0-60 seconds - set time to 0 to disable auto power off
Memory Info	Shows Total and free memory on the player
Firmware Version	Displays the firmware version of the player
Exit	Exit from the menu

NOTE: Short pressing PLAY can fast exit the menu.

E-DOCUMENT



Use this option to read text files stored on the player's memory.

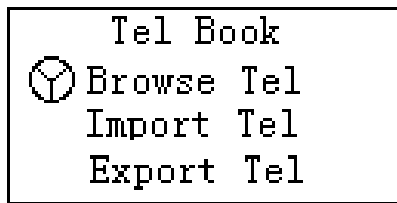
1. Long press MODE button to display Main Menu
2. Press NEXT to select e-Document
3. Short press Mode to enter e-Document mode and displays stored text files.
4. Press NEXT/PREV to select a file, and short press Play to display the file.

NOTE: If the text file is in a folder other than the root folder then press NEXT or PREV to select the folder, which contains the file you want to read, and Short press PLAY to open that folder.

NOTE: When reading files, if the player is in "Manual play" state, you should Press NEXT or PREV to turn over the pages. If it's in "Auto

play” state, it will turn over pages automatically.

TELEPHONE BOOK



Finding telephone information?

1. Long press MODE button to display Main Menu
2. Press NEXT to select Telephone Book
3. Press **Play** to enter Telephone book mode.

Detail of the submenu lists below:

File Select
RECORD
TEL CSV

- a. Push **NEXT** to choose Browse TEL and press **Play** to make the selection.
- b. Push **NEXT** to scroll to the select a phone book entry

c. Press **Mode** to exit.

Browse TEL:

Check the imported contacts, including Name, E-mail, Mobile, QQ, Telephone, Fax etc.

NOTE: If there is no telephone file on the player a warning message “No File!” will be displayed

Press and hold **MODE** to exit

Import Tel File: Use this option to Import Telephone book file from PC to the player.

Export Tel File: Export Telephone book file from the player to PC

USB DISK

The player can be used as a standard USB disk, supports the following operating systems:

Windows 98 (need driver installation),

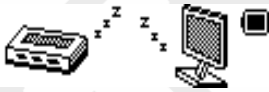
Windows 2000/ME, XP, Vista (Don't need

driver installation), Mac OS 10.3, Linux,

Redhat 8.0, and above.

The player also supports USB charge, and it can be used while it's getting charged (in waiting mode, short press Mode to exit to the Main menu and use the player.

The player displays the following three modes during it's connected to the computer:

1.Waiting mode 	2.File downloading
3. File uploading	

NOTE: In USB Disk mode the player's memory appears as Removable Disk under computer's File Manager (Windows Explorer or Finder). You can drag and drop supported files from your computer's hard drive to removable disk.

UPGRADE PLAYER'S FIRMWARE

The firmware on this player is user upgradeable. Please email help@hittusa.com to check if new firmware is available. If new firmware is available it will be emailed to you with instructions to upgrade the firmware

OTHER SETTINGS

- **Selecting folder other than root folder to select and play files**

You can put music, voice and text files into different folders on the player's memory while player is connected to the computer.

NOTE: The player supports up to 9 sub-folders in the ROOT

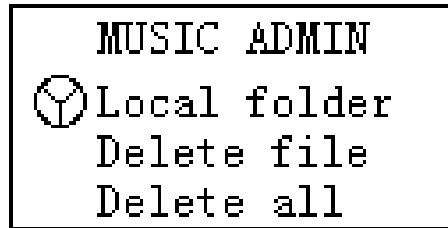
Selecting different folder

1. In Pause mode (take music mode for example) short press Mode to enter Music sub-menu	2. Select Local Folder to display root folder and any sub-folders
3. Press NEXT or PREV to select the folder you want to open	4. Press NEXT or PRE to select the music file you want to play
5. Press Mode to confirm the selection	6. Press PLAY to start playing the music file

Note: You can create separate folders for Music, Recording and Text files.

Delete files

In Pause mode short press Mode to enter Music sub-menu






Select “Delete File” (to delete current file) or “Delete all” files in the current folder, associated with the current Mode (Music, Voice, etc.) e.g. selecting “delete all” in music mode, will delete all music files but won’t delete recording files.



⚠ Please make sure to properly exit the player after deleting files, not doing so may not delete the files.

Play mode

You can select different play sub-menus in music and recording files play mode

 Normal	Playing music files in sequence until the end of folder
 Repeat One	Repeat single music file
 Repeat All	Repeat all music files

Replay (A-B repeat)

1. Setup during Music play or Voice replay
2. Short press Mode to enter Play sub-menu
3. Press NEXT to select “Replay”
4. Short press Mode to enter Replay mode
5. Press NEXT to confirm A. “A” is starting point for replay, replay icon  will start to flash, which means it is in replay setup mode and waiting for the selection of end point B
6. When ready, press NEXT to confirm B
7. Then icon  will stop flashing and will begin to replay the song continuously between A and B
8. Press NEXT to exit replay mode.

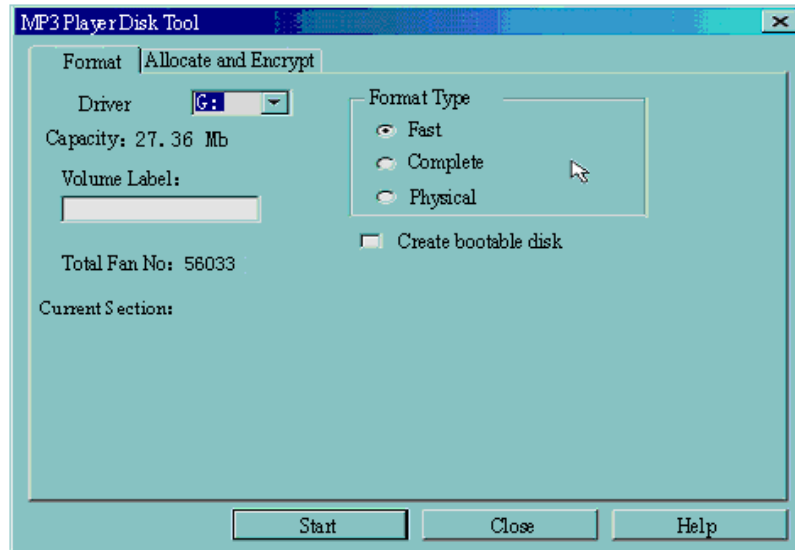
CREATE SECURED DATA PARTITION

Use provided software to divide player’s memory into two partitions, and password protect one of the partitions. User can save important information in the secured partition.

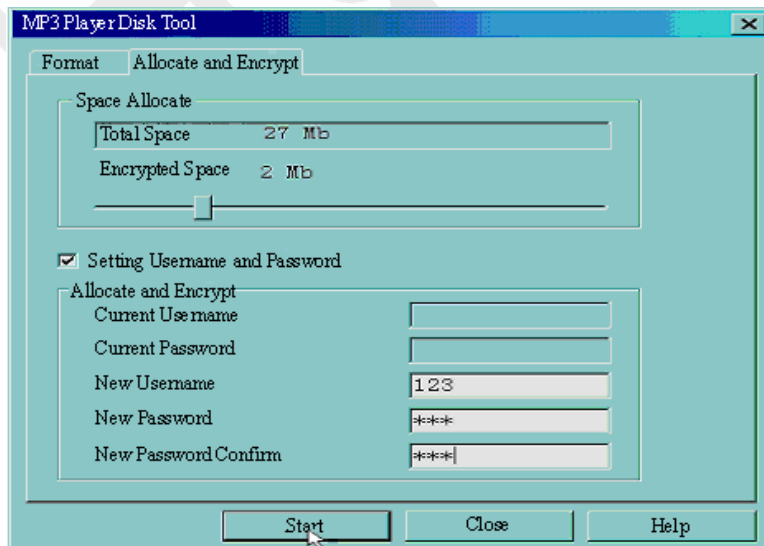
To activate Secured Partition:

1. Connect your player to PC

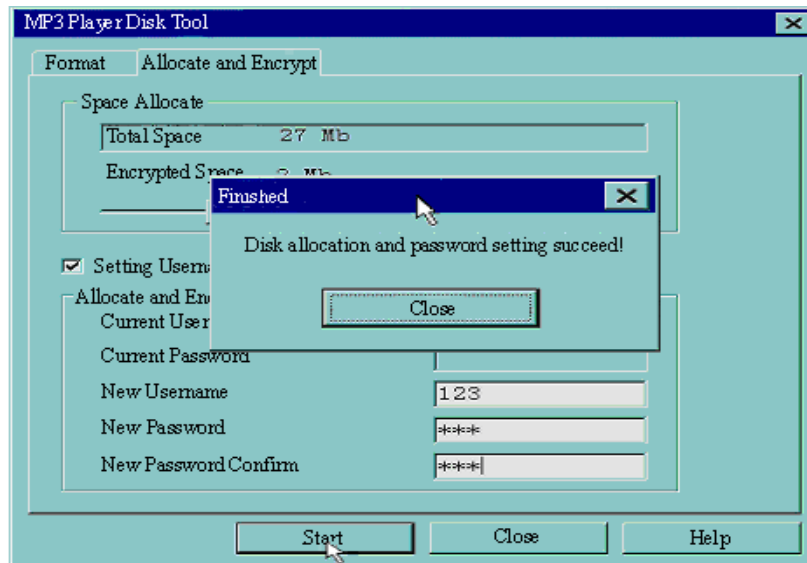
2. Run *MP3 Player Disk Tool* which can be found in provided CDROM



3. Click 'Allocation and Encrypt' card; allocate appropriate space and set username and password, and then click Start.



4. After space allocation, shown as below:

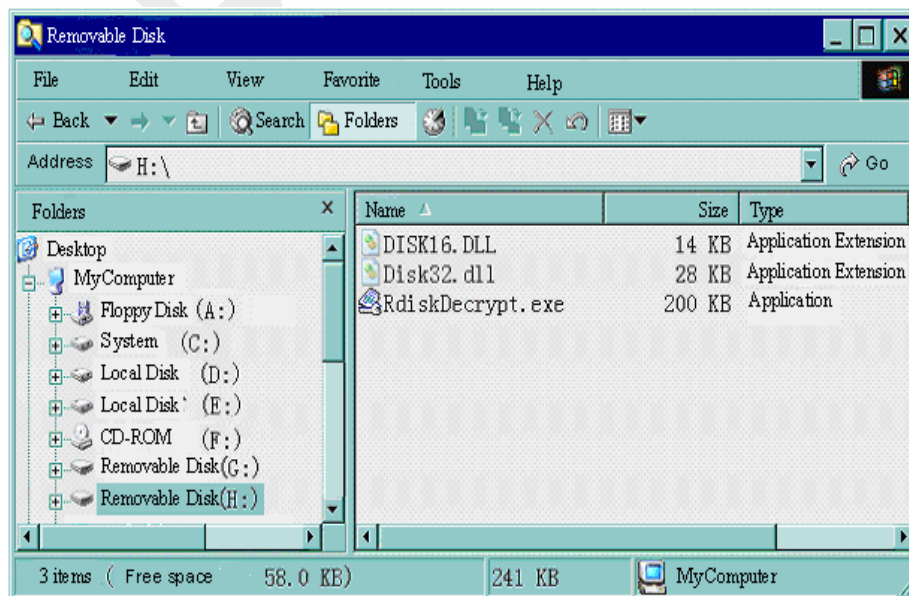


5. Click 'OK' to restart.

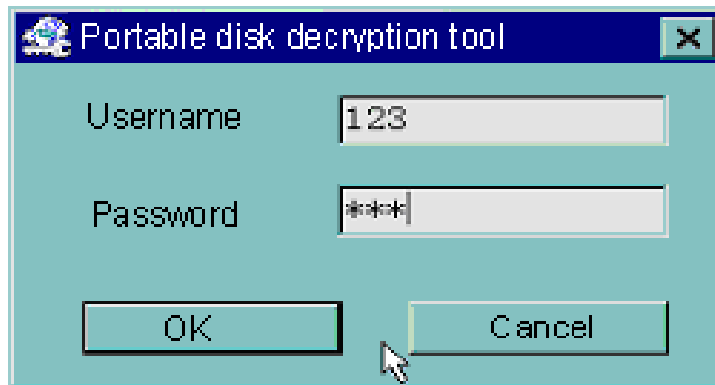
6. After restart, user will find two disks (only one disk can be seen on OS older than

Windows 2K SP4), click the encrypted disk

(the second one), user will find three files, two are hidden and one is executable



7. Run executable file 'RdiskDecrypt.exe' and enter username and password.



8. If username and password are correct, the disk will open, and files can be copied



Warning: Creating and removing secured partition will delete all data.



Warning: Please note down username and password. In case user forgets username or password then the secured partition must be removed and recreated which will delete all data.

TROUBLESHOOTING

No power	Make sure the battery is charged and ON/OFF switch is in ON position
No sound in earphone	Check to make sure the volume level is not set to "0" and the earphone is properly inserted into the earphone jack
Abnormal words display on the screen	Check if you've chosen the right language
Can not download music successfully	Check USB cable is connected properly to the computer and MP3 player. Make sure there is free space on the player's memory to store new files
Some or all of the songs I downloaded cannot be seen on the player when playing songs	Make sure the songs files are in one of the supported music file formats. Do not use song synchronization programs to copy songs from computer to this player. User MUST use File manager e.g. Windows Explorer® or Finder® to drag

	and drop song files (in one of the supported formats) from computer to the player.
--	--

TECHNICAL SPECIFICATIONS

Screen	128*64 LCD screen.	
USB	HDUSB2.0 read1000K Byte, write 800K Byte)	
Flash	128M—4GBM	
Power	Max 10 hours	
Recording	Sampling Rate	8KHz
	Record format	WAV (32K bps)、
	Time	35hours (ACT, 128M Flash)
Music	Headset maximum output	(L) 10mW + (R)10mW (32Ohm)
	MP3 bit rate	8K bps – 320K bps
	WMA、WMV、ASF bit rate	5K bps – 384K bps
	Frequency Response	20Hz~20KH z
	Signal-to-Noise	80dB
Music format	MP1、MP2、MP3、WMA、WMV、OGG	
Temperature	-5 ~40°C	

Language	Simplified Chinese, English, Traditional Chinese, German, French, Italian, Spanish (total of 19 languages)
System	Windows98/SE/ME/2K/XP/Vista/7; Mac OS 10、Linux 2.4.2

NOTE: Product design and specifications may change without prior notice

LIMITED 90-DAY WARRANTY

Coverage: Hi-Tech Trading (USA), Inc. (“HiTT”) warrants this product (“product”) against defects in materials and workmanship under normal consumer use for 90 days from the date of purchase. HiTT, at its option, will at no charge repair, replace or refund the purchase price of this product should it not conform to this warranty. This limited warranty is a consumer’s exclusive remedy, extends only to the first consumer purchaser, is not transferable and is valid only on products purchased by consumers in the United States or Canada.

Exclusions:

Normal Wear and Tear: Periodic maintenance, repair and replacement of parts due to normal wear and tear are excluded from coverage.

Batteries: Only batteries whose fully charged capacity falls below 80% of their rated capacity and batteries that leak during warranty period are covered by this limited warranty.

Miscellaneous: This warranty does NOT cover defects or damage that result from: (a) improper operation, storage, misuse or abuse, accident or neglect, such as physical damage (cracks, scratches, etc.)

to the surface of the Product resulting from misuse; (b) contact with liquid, water, rain, extreme humidity or heavy perspiration, sand, dirt or the like, extreme heat, or food; (c) use of the Product for commercial purposes or subjecting the Product to abnormal usage or conditions; (d) service, installation, alteration, or modification in any way by someone other than HiTT and, (e) other acts which are not the fault of HiTT.

Obtaining Service: To obtain service or information, please send email to **help@hittusa.com**. You will receive instructions on how to ship the Product, at your expense, to a HiTT Service Center. To obtain service, you must include a copy of your receipt.

HE-MP44F

COMPANY & CONTACT INFORMATION

Hi-Tech Trading USA Inc
P.O. Box 179
Woodbury, NY 11797 U.S.A.
Web: www.hittusa.com
Email: help@hittusa.com

ZOpid and the Stylized Logo are registered in the US Patent & Trademark Office. All other product or service names are the property of their respective owners.

© 2010 Hi-Tech Trading USA Inc

The information contained in this User Manual is believed to be correct at the time of printing. HiTT reserves the right to change or modify any information or specifications without notice. The contents of this User Manual are provided “as is.” Except as required by applicable law, no warranties of any kind, either express or implied, including, but not limited to, the implied warranties of merchantability and fitness for a particular purpose, are made in relation to the accuracy, reliability, or contents of this guide.